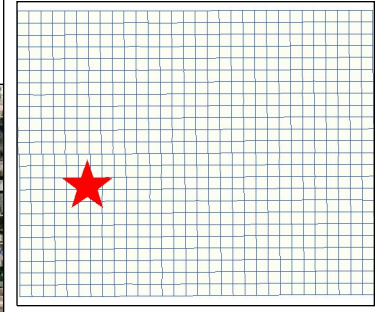
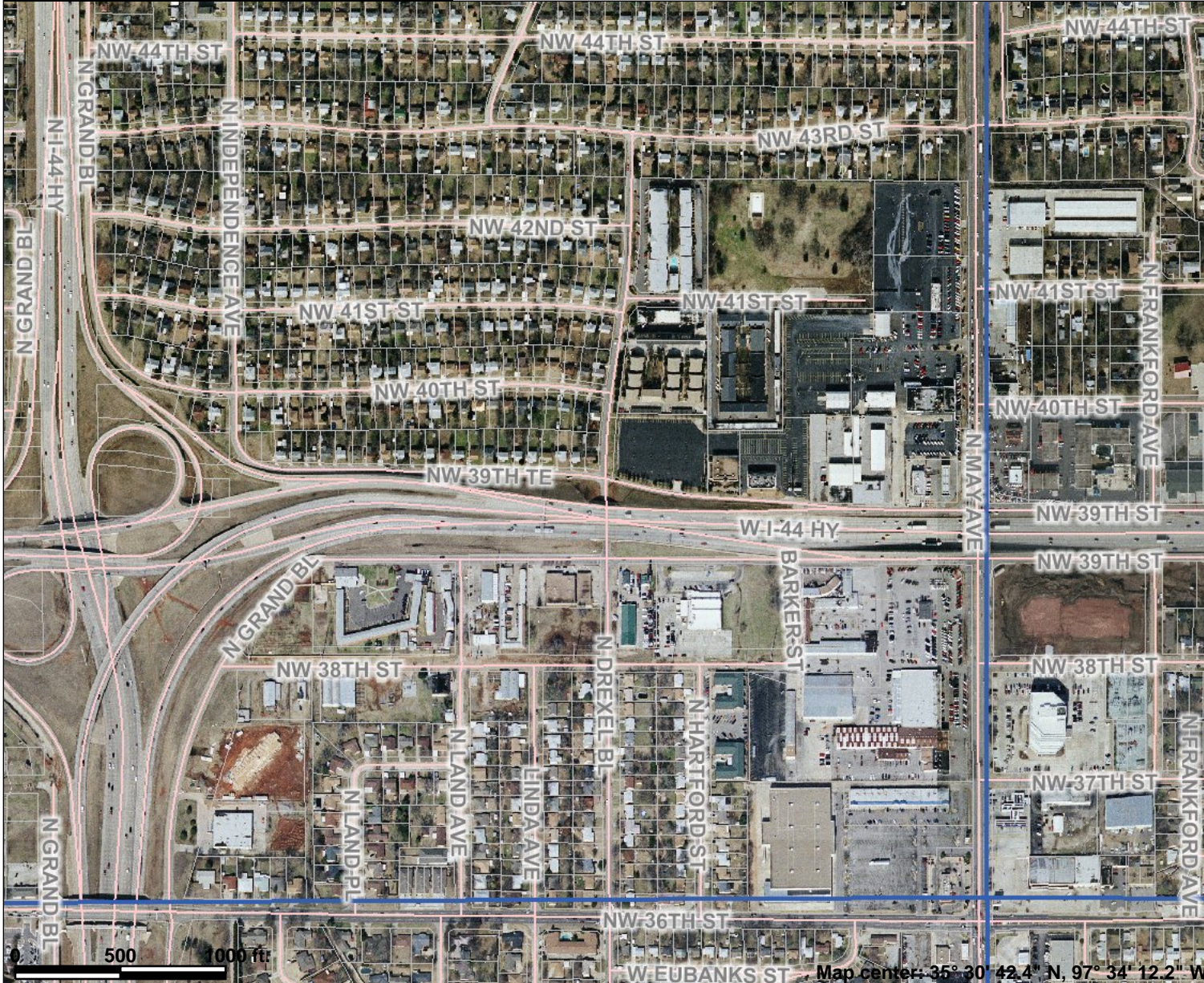




# 39th and May 2



### Legend

- Sections
- Streets
- Parcels
- North Canadian River
- Rivers & Creeks
- Lakes
- Aerials (flown Feb 10th, 2005)
- County Background



Map center: 35° 30' 42.4" N, 97° 34' 12.2" W



Scale: 1:8,785

This map is a user generated static output from an Internet mapping site and is for general reference only. Data layers that appear on this map may or may not be accurate, current, or otherwise reliable. THIS MAP IS NOT TO BE USED FOR NAVIGATION.