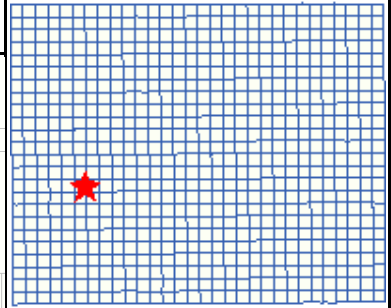
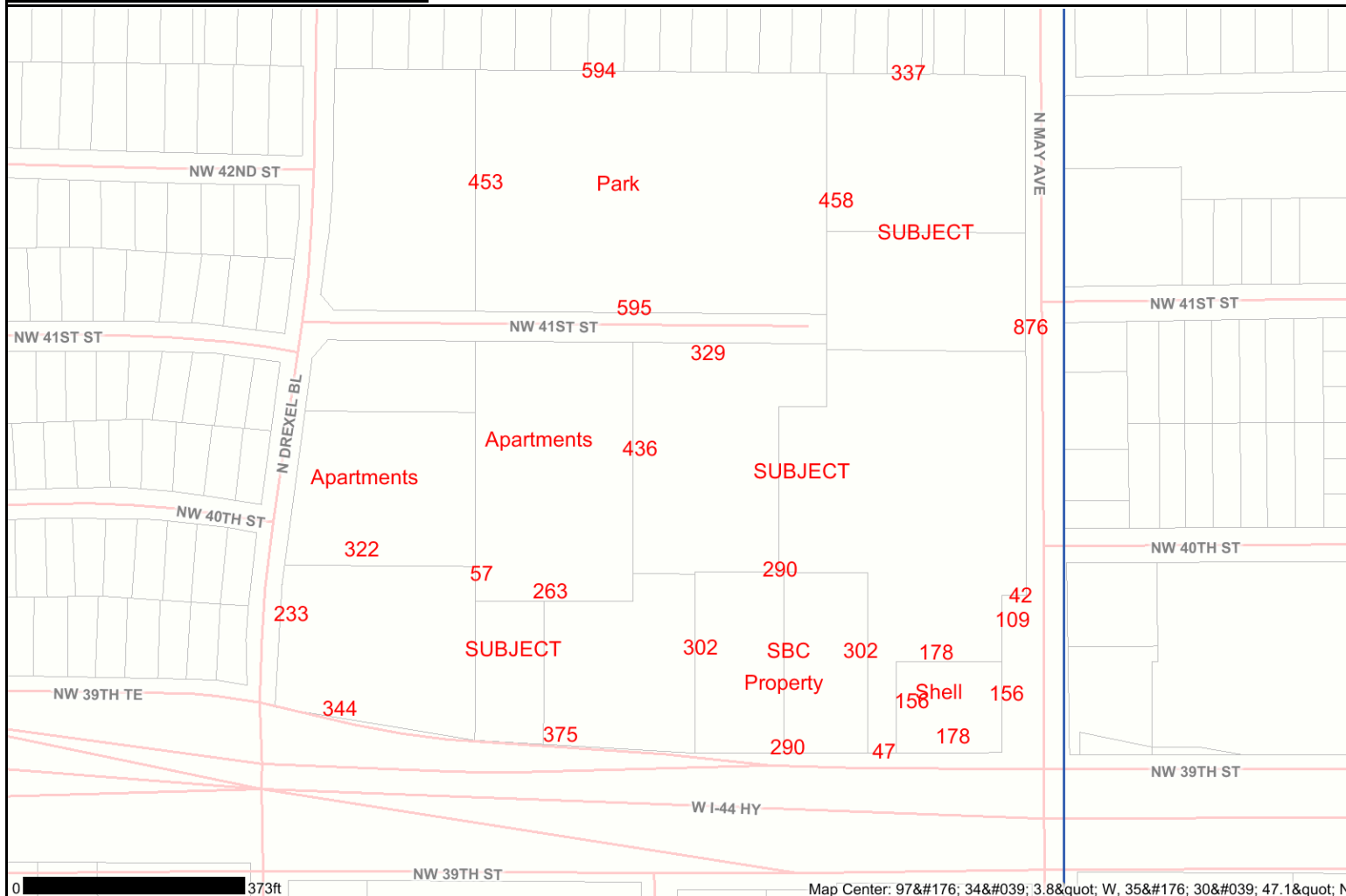


Approx Dimensions of NWC I-44 and May



- Sections
- Streets
- Parcels
- North Canadian River
- Rivers & Creeks
- Lakes
- County Background

0 373ft Map Center: 97°17'34.8" W, 35°17'30.471" N

This map is a user generated static output from an Internet mapping site and is for general reference only. Data layers that appear on this map may or may not be accurate, current, or otherwise reliable. THIS MAP IS NOT TO BE USED FOR NAVIGATION. Use and distribution of this map subject to copying and disclaimer notices at www.geocortex.net.



Map Scale
 1 : 3399